

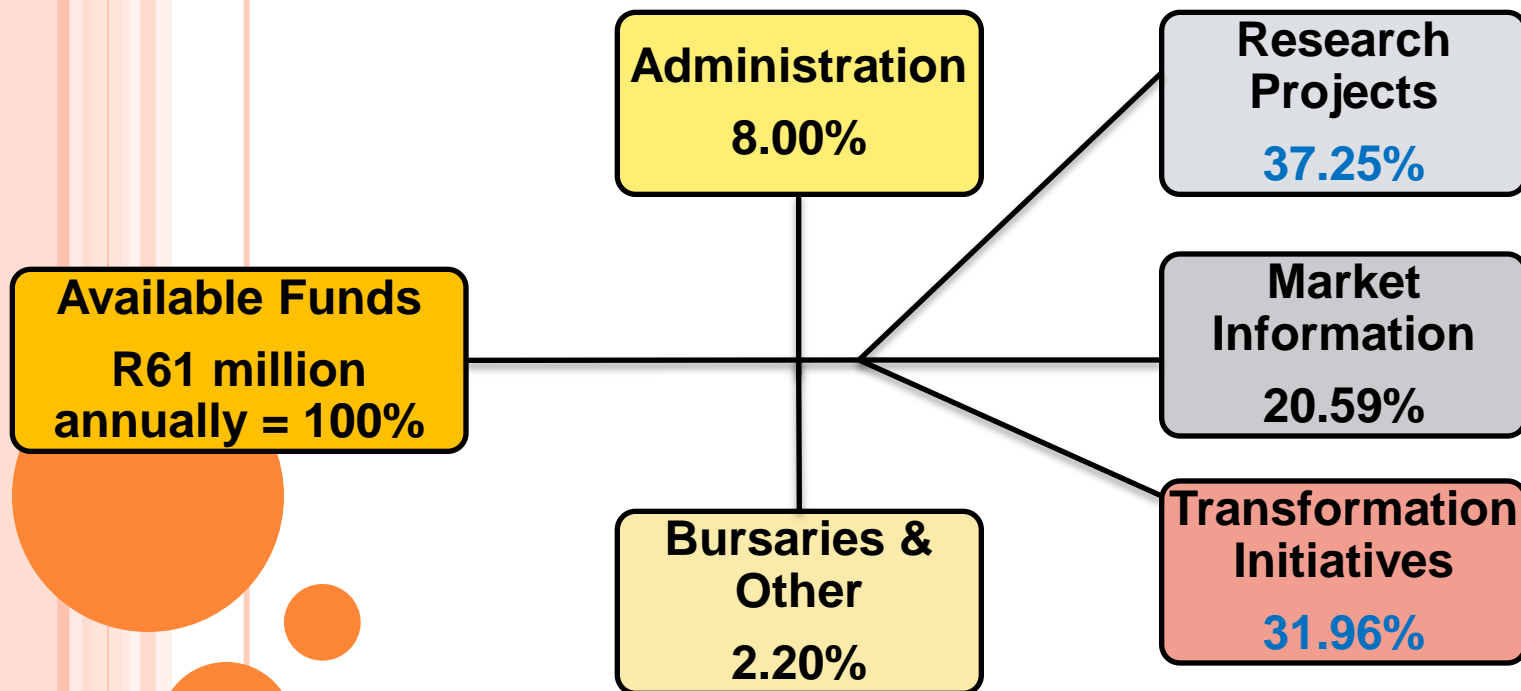
THE MAIZE TRUST

Leon du Plessis
L&L Agricultural Services
Administrators

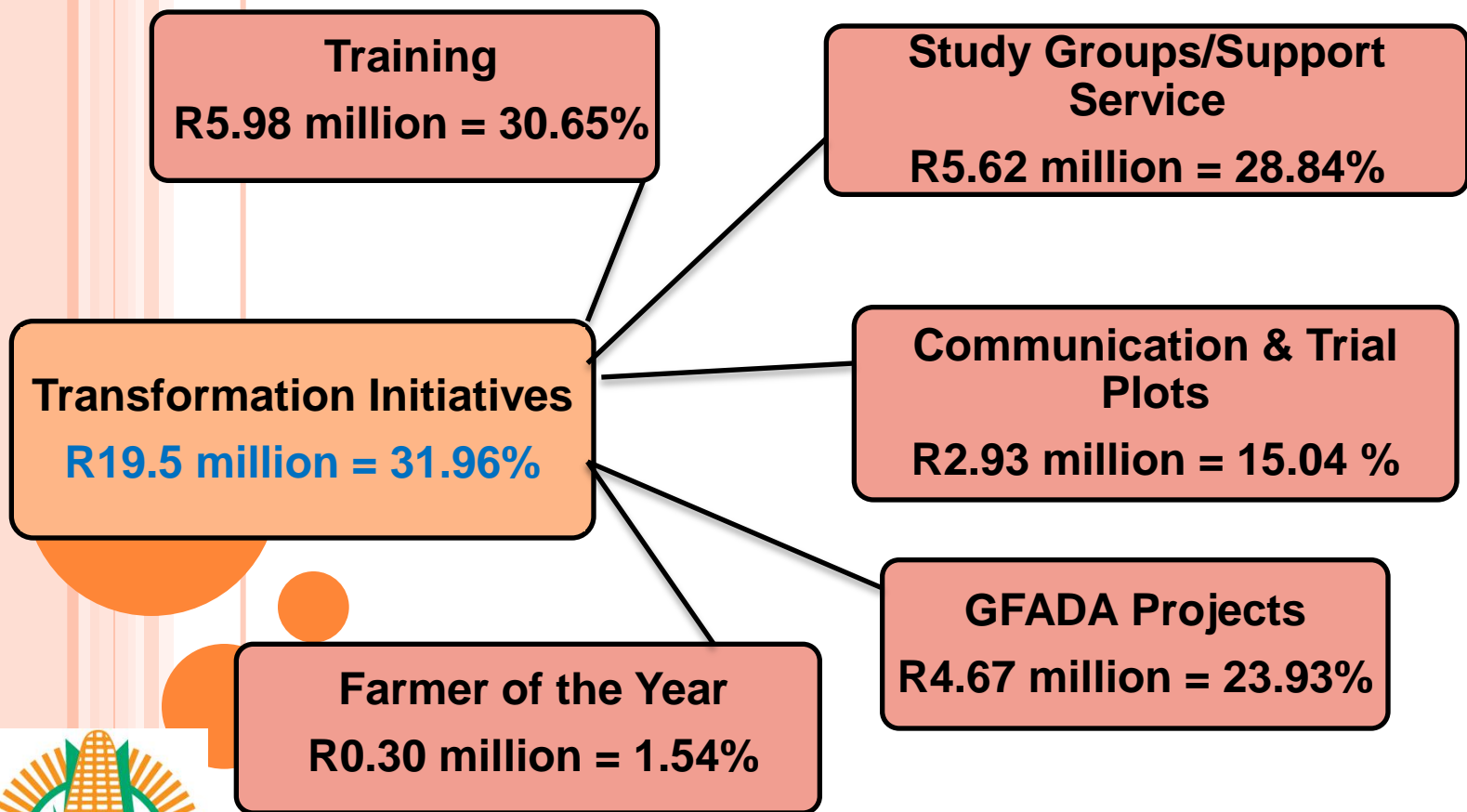
14 February 2014



FUNDING MODEL AND EXPENSES



FUNDING MODEL AND EXPENSES



GRAIN FARMER DEVELOPMENT ASSOCIATION

- No longer maize specific but all grains
- Allows for crop rotation and choice for farmer
- Makes direct assistance to farmer possible
- Increased collaboration with co-funders
- Independent service provider to grain industries
- Funding norms can be adjusted according to needs
- Profitability of farmers can be improved
- Aim is to develop commercial grain producers
- New mandate:
 - Soil correction (soil analyses and lime)
 - Crop insurance premiums
 - Direct input costs
 - Mentorship



GRAIN FARMER DEVELOPMENT ASSOCIATION

In current year, 53 farmers are being assisted on 4982 hectares in North West/Gauteng, Eastern Cape, Free State and Mpumalanga.



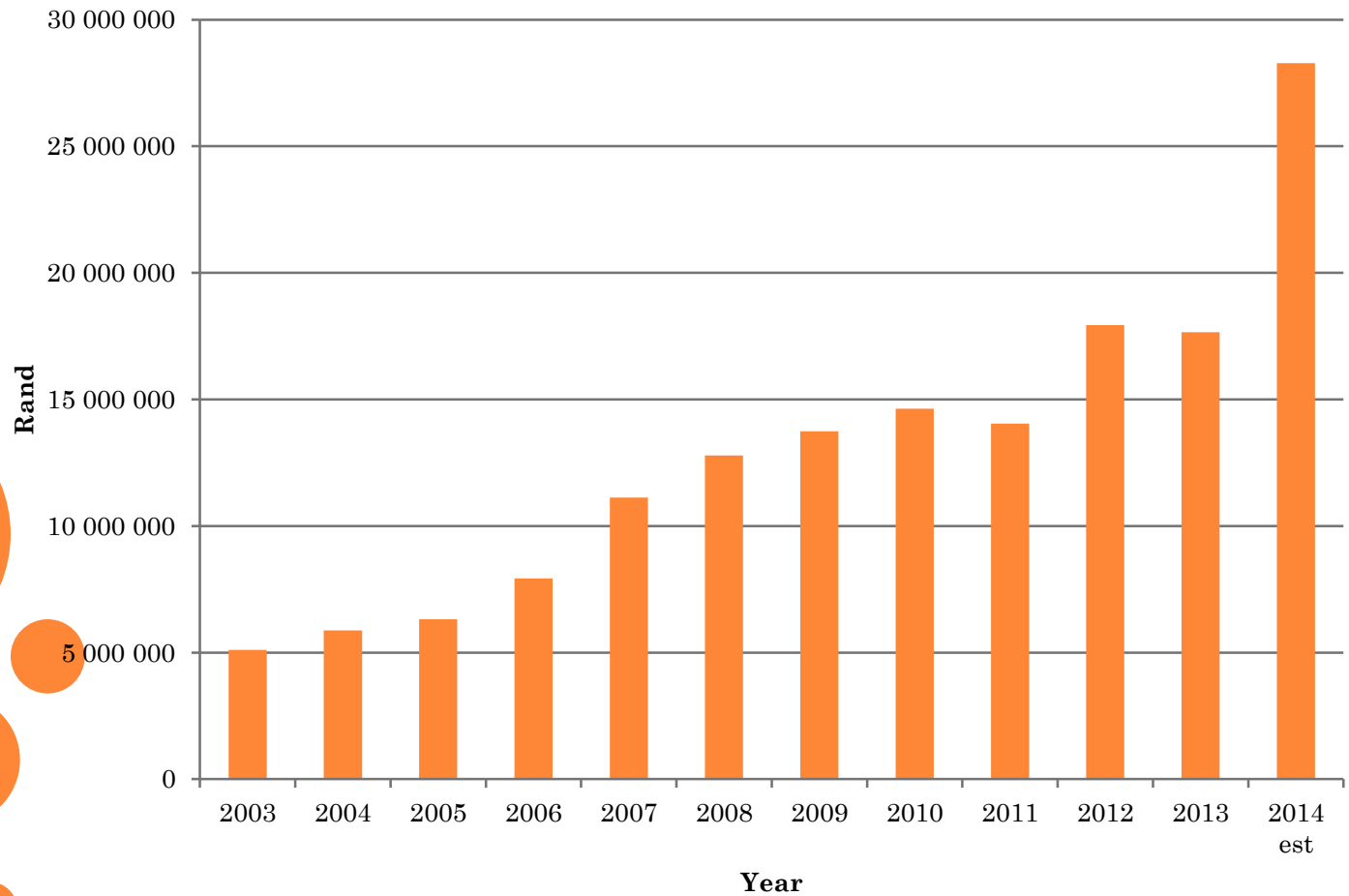
14 February 2014

GRAIN SA FARMER DEVELOPMENT PROGRAMME

- Main focus is on creation and servicing of advanced farmers and study groups
- Secondary focus is on information days and the provision of training courses
- Currently on farm service is provided to 110 advanced farmers in North West, Mpumalanga, Eastern Cape, Free State and KwaZulu Natal
- Access to financing and the availability of mechanisation are the major challenges



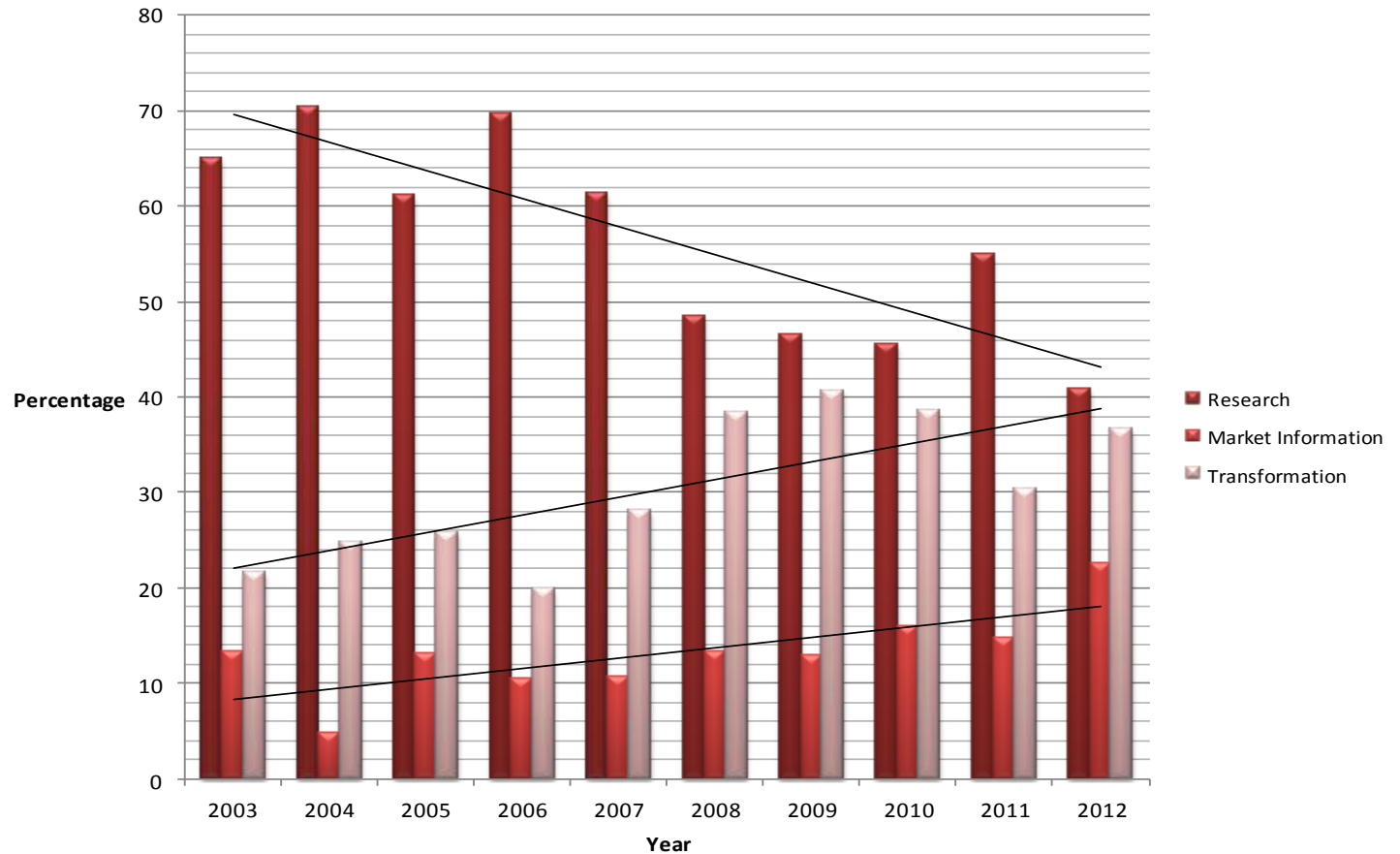
TRANSFORMATION FUNDING OVER TIME



14 February 2014

FUNDING TRENDS IN INDUSTRY

MT Funding per Objective over time (Actual payments in percentages)



14 February 2014

QUESTIONS?
THANK YOU

THE END



14 February 2014